

# Sailing Instructions

## 1 Rules

**1.1** Races will be governed by the 2009 - 2012 Racing Rules of Sailing ('RRS'), the prescriptions of US SAILING, the rules of PHRF Northwest, PIYA Category Equipment Requirements, these Sailing Instructions, and the Notice of Race (NOR) for each series. In case of conflict between these Sailing Instructions and the NOR for a specific series, that NOR will govern.

**1.2** Races are open to all mono-hull yachts. Entrants need not be members of a recognized yacht club. The committee for each series reserves the right to accept any or all entries.

**1.3** Entrants are encouraged to be members of PHRF-NW and have a current rating certificate; however, entrants may be assigned a rating by the club handicapper for the series or race governed by this racing packet.

## 2 Entries

**2.1** Registration and entry fee shall be submitted to the Race Committee prior to the start of the series or race in accordance with the NOR for that event.

**2.2** There shall be two classes; flying and non-flying of spinnakers. If less than 3 yachts register for one class, all competitors will be scored as one class.

**2.3** Five or more yachts registering as a one design class, may get their own start and will be scored separately.

## 3 Notice to competitors

**3.1** Changes to the Sailing Instructions of this packet, or the NOR for a particular series will be posted on the bulletin board at the Oak Harbor Marina no less than one hour prior to the first race of that series. Changes may also be posted on the internet prior to one hour before the start of the first race of that series.

## 4 Cancellation

**4.1** In the event of high wind conditions (winds exceeding 35 mph), postponement will be posted on the bulletin board at the Oak Harbor Marina no less than one hour prior to the scheduled start of the days racing. There shall also be an announcement on VHF channel 72.

**4.2** If winds exceed 35 mph as measured on the course by the race committee, the race may be abandoned, and an announcement made on VHF channel 72. The responsibility for a boat's decision to participate in a race or to continue racing is hers alone.

**4.3** In the event of light winds (less than 3 mph, with no signs of improving) as measured on the course by the race committee, the race may be abandoned not less than 45 minutes following the scheduled start time, and an announcement made on VHF channel 72.

**4.4** It shall take 3 boats (not including the race committee) to constitute a race.

## 5 Courses

**5.1** Courses will be set within the areas of Oak Harbor, Saratoga Passage, Penn Cove and/or Crescent Harbor.

**5.2** All marks to be used will be as described in Appendix A of this packet.

**5.3** The sequence of marks for each course will be posted on the reader board of the committee boat and/or hailed on VHF channel 72 prior to the starting sequence for each

race. There shall be no changes made to the posted reader board once the starting sequence has begun.

**5.4** Race Committee may shorten course after the start in accordance with the RRS 32.2 and using signals in Appendix C, page 9 of this packet.

**5.5** All marks will be rounded to port with the exception of a leeward gate, which allows the yacht the option of port or starboard rounding after entering the gate (as described in Appendix A on page 4 of this packet).

## 6 Starting and Finishing

**6.1** Races starting on time as scheduled in the NOR for that series shall not be required to be preceded by a postponement "AP" flag or any other preparatory signals. They may be started with the hoisting of the class flag and appropriate sound signals as described in section 6.7 of this packet.

**6.2** At the discretion of the race committee, an auditory signal of several short blasts may be given no more than one minute prior to the beginning of the starting sequence to alert competitors of the upcoming sequence.

**6.3** All subsequent races that day may be started after all competitors in a class have completed the race or retired from the race, and within one minute of the removal of the postponement "AP" flag, or within one minute of an auditory signal of several short blasts to alert competitors of the upcoming sequence.

**6.4** Starting and finishing lines shall be between the designated start and finish pin as described in Appendix A of this packet, and the orange flag located on the committee boat.

**6.5** Yachts must cross the start line in the direction toward the first mark of the course, round all marks as required, and cross the finish line in the direction from the last mark.

**6.6** After starting, yachts shall not cross the start/finish line except to finish, with the following exceptions:

**A)** When the start/finish line is used as a leeward gate (as described in Appendix A on page 4 of this packet).

**B)** During a windward leeward course consisting of more than one lap, yachts shall be required to sail through the start finish line on each upwind leg of the course. Each time a yacht crosses the start/finish line the committee will record the yachts time to be used to constitute a race if no yacht can finish all laps.

**6.7** Starting Signal sequence is as follows:

TIME	FLAG COLOR/POSITION	(If more than one start)	SIGNAL
*6 minutes*	Postponement (AP) <b>Down</b>		Several short blasts
5 minutes	Yellow (Class Flag) <b>Up</b>		1 Horn
4 minutes	P Flag <b>Up</b>		1 Horn
1 minute	P Flag <b>Down</b>		1 Horn
Start	Yellow (Class Flag) <b>Down</b>	next class flag <b>Up</b>	1 Horn

\* AP flag may not always be used (See section 6.1 - 6.3).\*

**6.8** When starting multiple classes, subsequent class' 5 minute sequence will begin by hoisting their class flag while the previous class flag is lowered at the start. The P flag is then hoisted with 4 minutes to go, lowered at 1 minute to go and that class flag lowered at the start. This may be repeated as necessary to start all classes at 5 minute intervals.

**6.9** Finish times will be recorded when the front of the finishing boat crosses the line between the designated start/finish pin (as described in Appendix A on page 4 of this packet), and the orange flag located on the committee boat.

## **7 Recalls**

**7.1** Individual recalls will be handled according to RRS Rule 29.

**7.2** The race committee may attempt to hail the sail numbers of recalled boats. Failure to do so, the timing of the hails, the order of the hails, the failure to hear the hail, or any other issues associated with the hail will not constitute grounds for redress. This modifies RRS 62.1(a).

**7.3** General recalls will be handled according to RRS Rule 29 if the race committee cannot determine which boat was OCS, or if more than four boats are OCS.

## **8 Penalties**

**8.1** In accordance with RRS 44 a two turn penalty (720) will exonerate a yacht from fouling another boat. A one turn penalty (360) will exonerate a yacht from touching a mark.

## **9 Time limits**

**9.1** Time limits will be 2 ½ hours per race, or as described in the NOR for each series.

**9.2** All yachts not finishing within 45 minutes of the first yacht in her class shall be scored DNF.

## **10 Scoring**

**10.1** The Low-point scoring system will apply for all races unless specifically noted in the NOR for a series.

**10.2** Throw-outs will be determined by the NOR for each series.

**10.3** In the event of a tie, they will be decided according to Appendix A of the RRS sections A7 and A8.

## **11 Communications**

**11.1** All race communications to competitors will be made on VHF channel 72

**11.2** Courses may be hailed by committee prior to the beginning of the starting sequence of that race, recalls may be hailed by committee as soon as possible after the start of a race, and course changes or abandonment may be hailed by the committee. All other communications between boats is prohibited during racing and shall be considered outside assistance.

## **12 Protests**

**12.1** Protests must be filed with the race committee within one hour of the race committee returning to the dock, in accordance with part IV of the IYRR as amended by the USSA.

**12.2** Protests are discouraged. However, if a rule is broken and you are protested, we hope you will exonerate yourself in accordance with 8.1 of this packet to avoid going to the protest room.

## **13 Results**

**13.1** Results will be posted on the sponsoring club's website as soon as possible following races, e-mailed to participants or as described in the NOR for each series.

## Appendix A- Mark Descriptions

### LIST OF MARKS:

### CODE

#### TEMPORARY RACE MARKS:

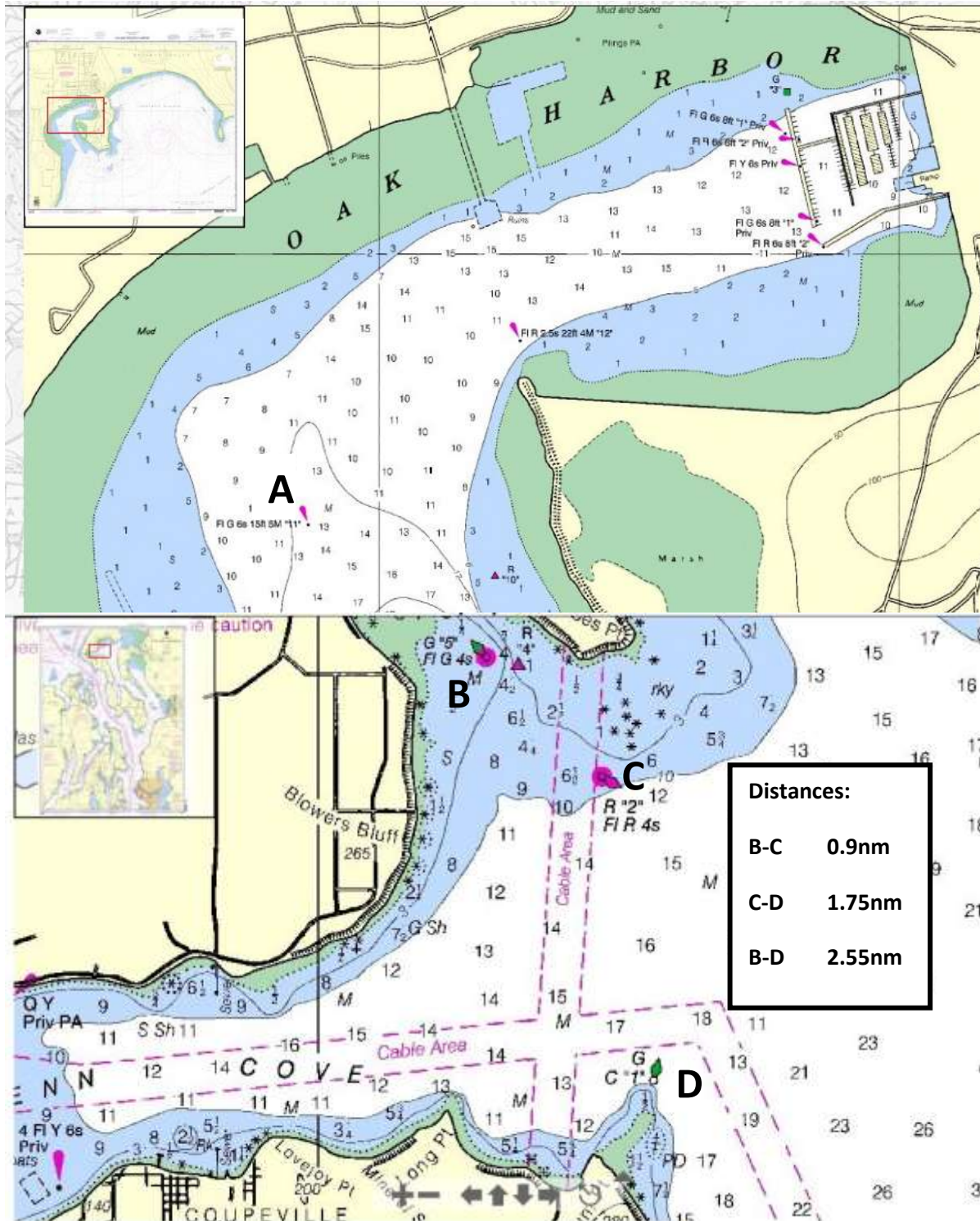
<p><b>Start / Finish Mark – Orange inflatable</b> within 150 yards of R/C boat Start finish line is between the orange inflatable and the orange flag on the R/C boat.</p>	<b>S/F</b>
<p><b>Windward Mark – Yellow inflatable</b> to weather of R/C boat Always round to port</p>	<b>W</b>
<p><b>Leeward Mark – Yellow inflatable</b> to leeward of R/C boat Always round to port</p>	<b>L</b>
<p><b>Leeward Gate – Orange inflatable</b> within 150 yards of R/C boat Same mark as S/F, must enter between S/F mark and R/C boat headed downwind, then you may either round the R/C boat to port OR the S/F mark to starboard.</p>	<b>G</b>

#### PERMANENT NAVIGATIONAL AIDES: (SEE CHARTS ON FOLLOWING PAGE)

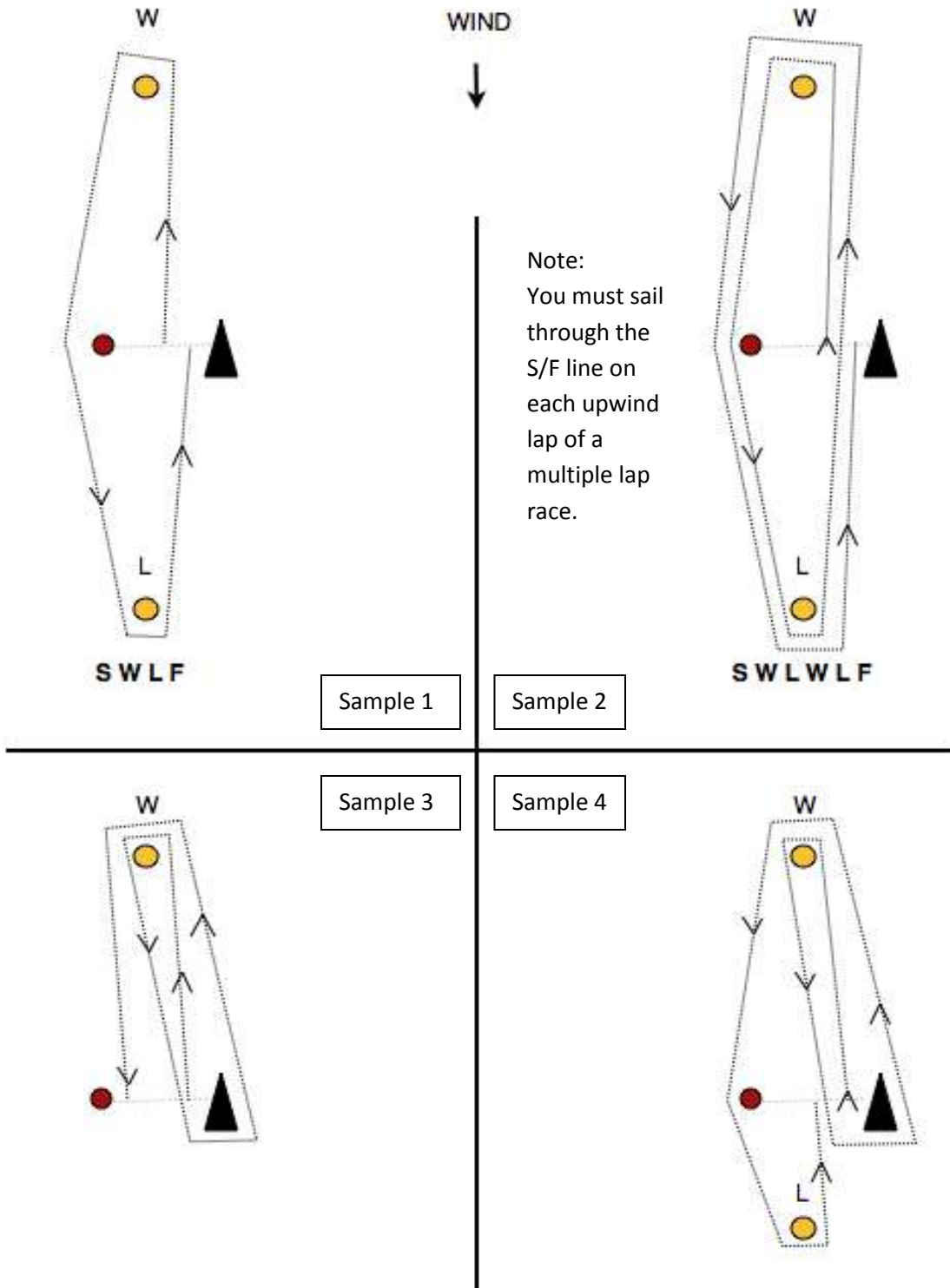
G “11”	<b>A</b>
G “5”	<b>B</b>
R “2”	<b>C</b>
G “1” (SNATELUM POINT)	<b>D</b>

## Appendix A – Permanent Mark Diagram

PERMANENT NAVIGATIONAL MARKS (and their corresponding course codes)



**Appendix B - Sample Course Diagrams**



Note:  
You must sail through the S/F line on each upwind lap of a multiple lap race.

**SWGWF**

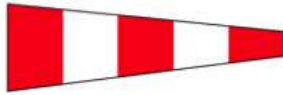
Note:  
G - You may round the RC boat to port OR S/F pin to starboard after entering the gate.  
W and L are always rounded to port.

**SWGWLF**

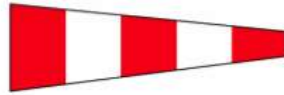
## Appendix C - Signals

The meanings of visual and sound signals are stated below. An arrow pointing up or down (↑ ↓) means that a visual signal is displayed or removed. A dot (•) means a sound; five short dashes (-----) mean repetitive sounds; a long dash (—) means a long sound. When a visual signal is displayed over a class flag, the signal applies only to that class.

### Postponement Signals



**AP** Races not started are *postponed*. The warning signal will be made 1 minute after removal unless at that time the race is *postponed* again or *abandoned*.



**AP over H** Races not started are *postponed*. Further signals ashore.



**AP over A** Races not started are *postponed*. No more racing today.

### Abandonment Signals



**N** All races that have started are *abandoned*. Return to the starting area. The warning signal will be made 1 minute after removal unless at that time the race is *abandoned* again or *postponed*.

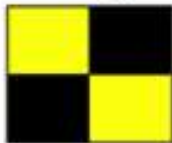


**N over H** All races are *abandoned*. Further signals ashore.



**N over A** All races are *abandoned*. No more racing today.

### Other Signals



**L** Ashore: A notice to competitors has been posted. Afloat: Come within hail or follow this boat.



**M** The object displaying this signal replaces a missing *mark*.



**Y** Wear a personal flotation device.



(no sound)

**Blue** flag or shape. This race committee boat is in position at the finishing line.

### Appendix C - Signals

#### Preparatory Signals



↑ ● ↓ —  
**P** Preparatory signal.



↑ ● ↓ —  
**I** Rule 30.1 is in effect.



↑ ● ↓ —  
**Z** Rule 30.2 is in effect.



↑ ● ↓ —  
**Black flag.**  
Rule 30.3 is in effect.

#### Recall Signals

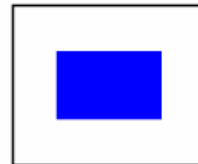


↑ ●  
**X** Individual recall.



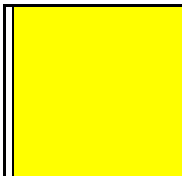
↑ ● ● ↓ ●  
**First Substitute** General recall.  
The warning signal will be made 1 minute after removal.

#### Shortened Course



↑ ● ●  
**S** The course has been shortened, rule 32.2 is in effect.

#### Class Flags



↑ ●  
PHRF Fleet



↑ ●  
San Juan 24